

# Why choose Engage as your SEND staffing partner?



# SEND | Engage Education

Engage is a trusted partner for schools and professionals in the SEND sector. Team up with us and be confident knowing you have access to top-quality staff. Our SEND team is focused on sourcing and recruiting exceptional candidates for all roles within the sector.

With over 40 years of collective experience in SEND, our specialist consultants are strategically based across the country, ensuring we provide expert local knowledge and comprehensive coverage.

We support SEND provision across a wide range of settings:

- Academies: Alternative Provision, Special
- Free Schools: Alternative Provision, Special
- Special Schools: Community, Foundation, Non-Maintained, Independent
- Other Provision: PRUs, Secure Units, Special Post-16 Institutions

Each setting has unique challenges which we tailor our recruitment process too. By matching candidates with the right skills, temperament, and experience to the needs of the school and its pupils.

[Our SEND Hub](#)



# Supporting SEND needs

We understand that every school and every student is different in their own way. Our candidate matching process ensures that we identify and provide staff with the exact experience needed to meet everyone's needs, fostering an environment where every student can thrive at their own pace.

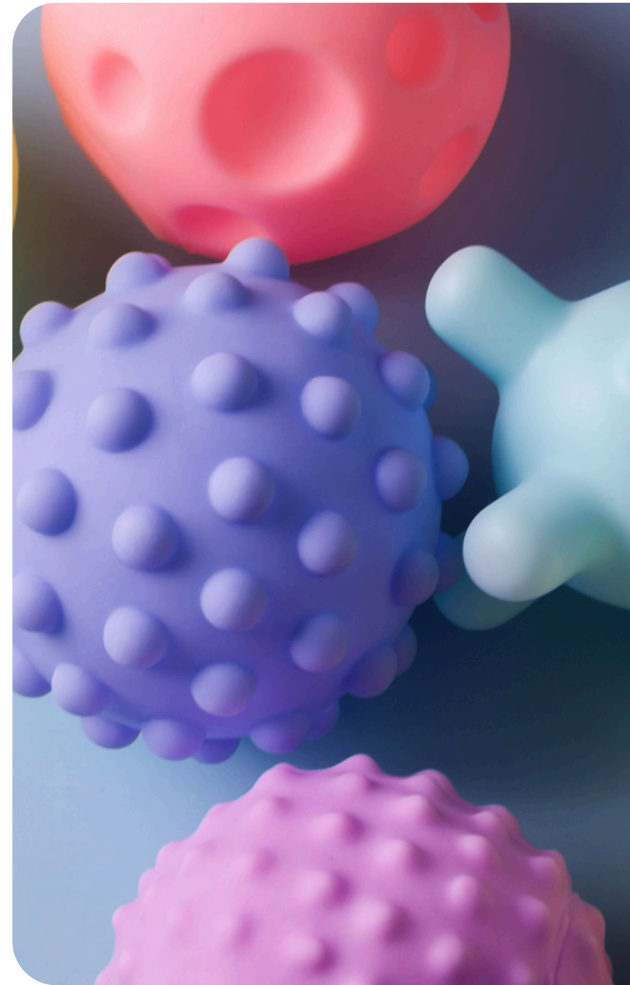
## The needs our SEND specialists support

If your school supports children with challenges in social interaction, emotional regulation, mental health, or behavioural manifestations, we can help find the right staff for you.

We source candidates with specific, proven experience working with pupils across the four broad areas of need:

- Physical & Sensory Needs
- Social, Emotional & Mental Health
- Cognition & Learning
- Communication & Interaction

This includes roles such as SEND Teachers, SENDCos, Learning Support Assistants, Teaching Assistants, Specialist Therapists and many more.



# Hire with confidence

## Our compliance:

Crown  
Commercial  
Service  
*Supplier*

Government-Approved Framework: We are an approved supplier on the Crown Commercial Service (CCS) framework, guaranteeing that our recruitment practices are fair, compliant, and efficient, and meet the strict legal requirements for working with schools.

Gold Standard Vetting: We are REC Audited (Gold Standard), demonstrating our commitment to statutory compliance and the highest ethical standards in education recruitment.



Department  
for Education



## Vetting Standards:

- ✓ Right to work in the UK
- ✓ Enhanced DBS
- ✓ Barred list (renewed every 12 months)
- ✓ Proof of identity and address
- ✓ Rehabilitation of offenders declaration
- ✓ Medical declaration
- ✓ Minimum 5 year employment history (no gaps)
- ✓ Prohibition List Check
- ✓ EEA Teacher Sanctions Check
- ✓ Overseas Police Check (where necessary)
- ✓ National Insurance Number
- ✓ Enhances Safeguarding Training
- ✓ References
- ✓ 'Keeping Children Safe in Education' DFE Guidance

# Why Engage?

Every candidate receives free, unlimited CPD, including courses on Safeguarding, Mental Health and the SEND Code of Practice - ensuring staff are prepared to deliver high quality support from day one.

Our partnership with [Creative Education](#) gives any candidate working with us free access to a comprehensive library of online CPD.

Explore our CPD page by clicking the laptop to see the training available to every Engage teacher working in your school.



We also offer a training programme that includes a dedicated SEND pathway, giving teaching assistants the specialist skills and confidence to support pupils with additional needs. In partnership with the UK's largest provider of [Teaching Assistant Apprenticeship Training](#), we help schools develop their own specialist support staff.

Alongside core modules like Safeguarding and Teaching Assistant Fundamentals, our training covers differentiated learning, behaviour support in SEND settings and effective collaboration with other professionals.

All staff placed in your school have access to 24/7 mental health and wellbeing support through our Employee Assistance Programme (EAP), delivered with the Education Support Partnership charity. It's one of the many benefits our candidates will receive when working with Engage. [See our full range of candidate benefits here.](#)

## Must read SEND blogs...

[5 ways to address SEND staff shortages](#)

[Supporting Teachers with Dyslexia](#)

[The importance of ongoing training for SEN teachers](#)

[What is SEN allowance for teachers?](#)



## Don't just take our word for it...

### Springwell School - Barnsley

"...They are readily available to answer any queries and provide some really great candidates that have settled into our schools really well, regardless of the setting... Most of the candidates end up being with us for the long term!"

### CCS Lancashire - Lancashire

"Recruiting short-term staff is often a cumbersome process but Engage Education made it as easy as it can be. From their simple to use online timesheets, friendly and honest Consultants and reasonable costs, using Engage has been a delight..."

[Feedback from all our schools](#)

## Make a difference in SEND

Join hundreds of schools nationwide who trust Engage to deliver exceptional SEND support. Get in touch today and let our specialist team help you find the right people to make a lasting impact.

[Book a call with our SEND team](#)

